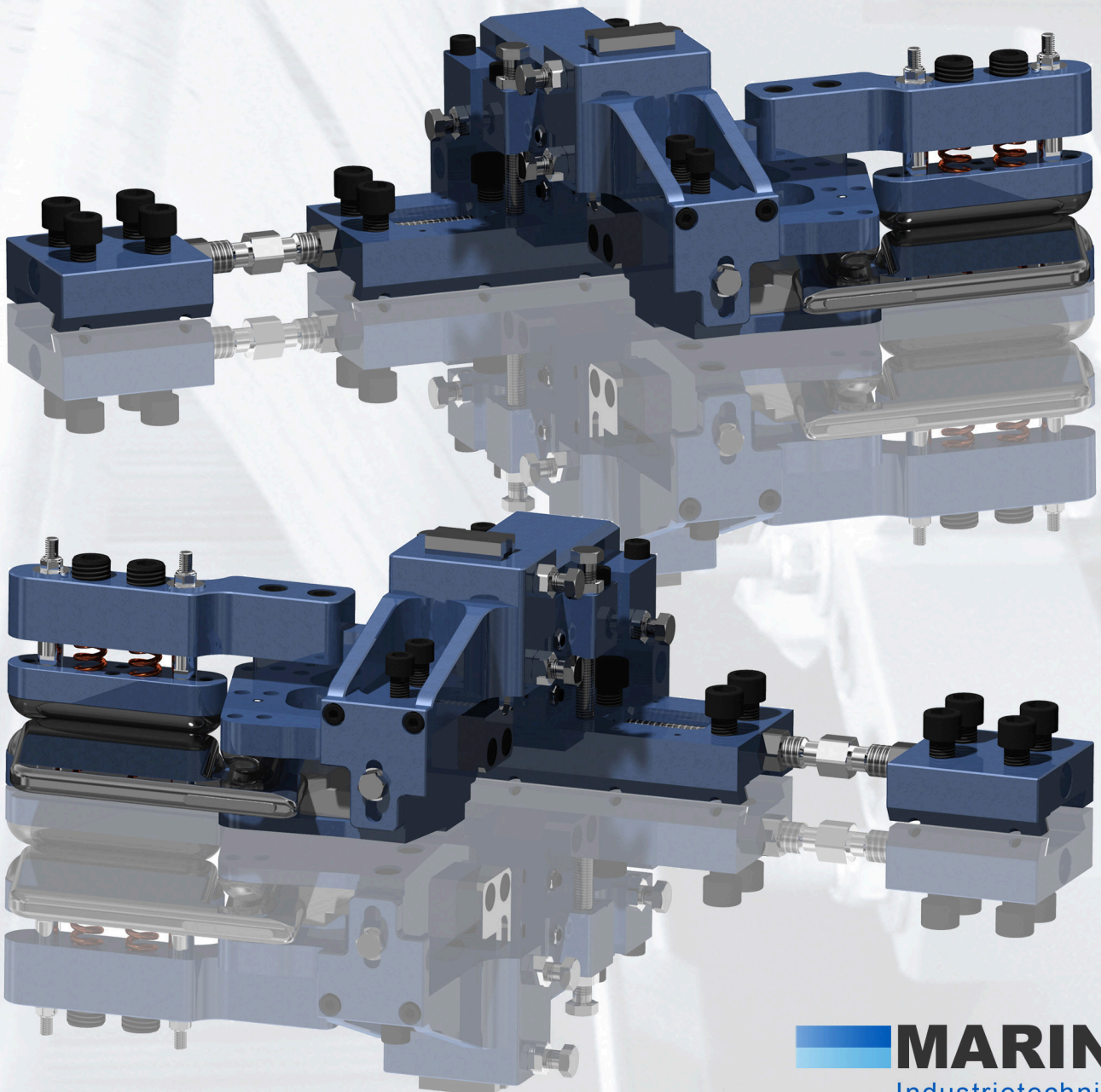


Solutions for Perfection from Marin Industrietechnik

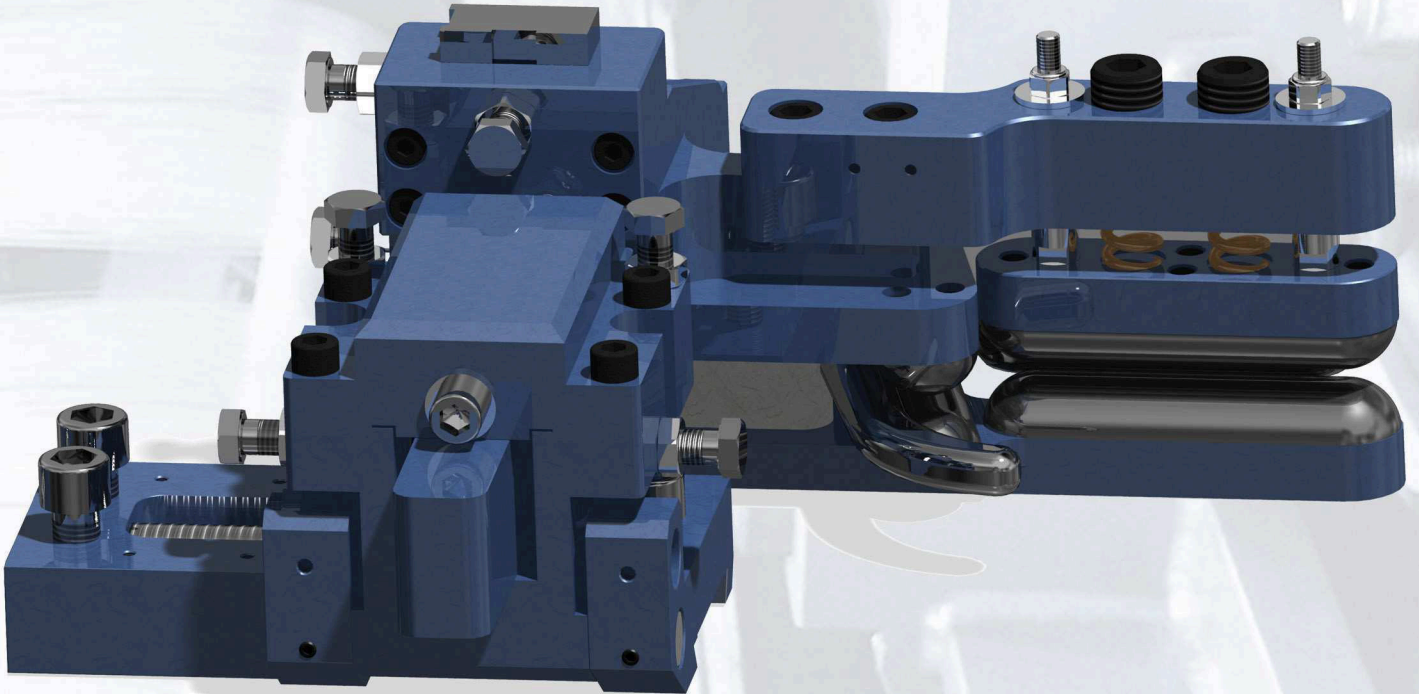
Heavy Weight Weaving Temples

- *Cost reduction due to long life materials*
- *Cost saving due to modular construction*
- *Straight line selvages & even fabric surfaces*
- *Optimal loop building at seam-felts*



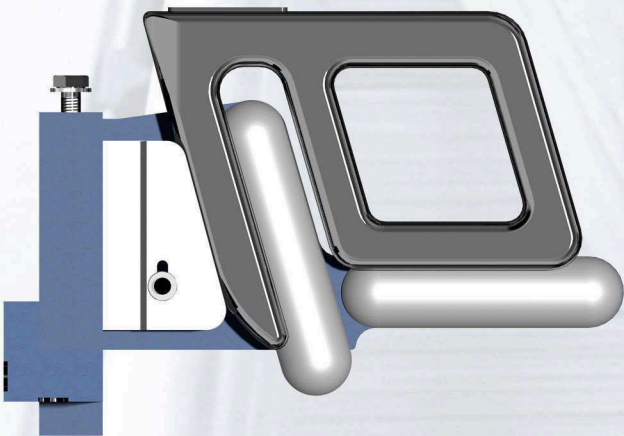
Heavy Weight Weaving Temple

Very stable temple especial constructed for heavy weight weaving looms with a reed width to about over 33 m. This temple is equipped with 2 fabric guides type LS (long), 2 fabric guides type KS (short) and a very stable lower bracket. Grounded V-strips (2,5 mm & 4,0 mm) at the dovetail guide allows a using range of the dovetail-latitude between 68,0 mm and 73,0 mm. The standard dovetail guide at the temple support and temple shoe amounts 73,0 mm at a angle of 60°. If the customer have dovetail guides in use below 68,0 mm, a special V-Strip could be manufactured to bridge the gap. If the dovetail guide has above 73,0 mm, the temple dovetail guide could be milled out regarding the need. Powder coated according RAL 5023 distant blue. Weight: approx.33 kg.



Guide Wedge

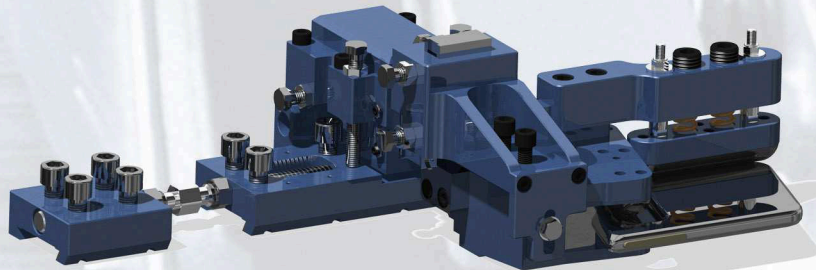
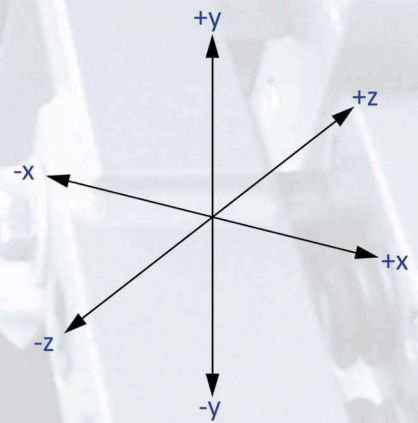
The guide wedge is constructed to hold the temple insert in position during the start-up weaving of a new base fabric after warp changing, narrowing broadening or rearranging.



Insert type A	Guide wedge AL or AR
Insert type B	Guide wedge BL or BR
Insert type C	Guide wedge CL or CR

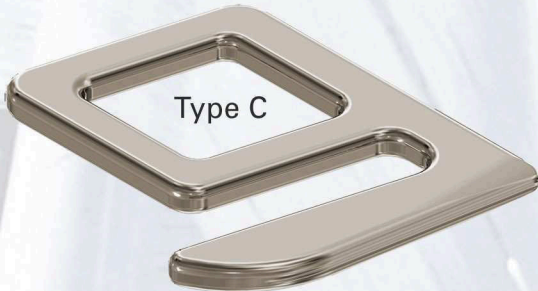
3-Axes Adjustments

The temple is fine adjustable in x, y and z-direction during the weaving under high tension.



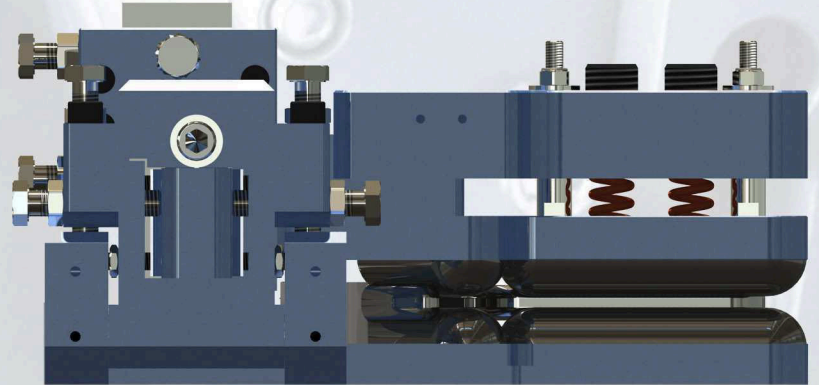
Temple Inserts

Full high-grade steel inserts - for every base fabric quality, the right solution. Grind- and polishable to ensure a long-life use and to be adaptable to the requirements.



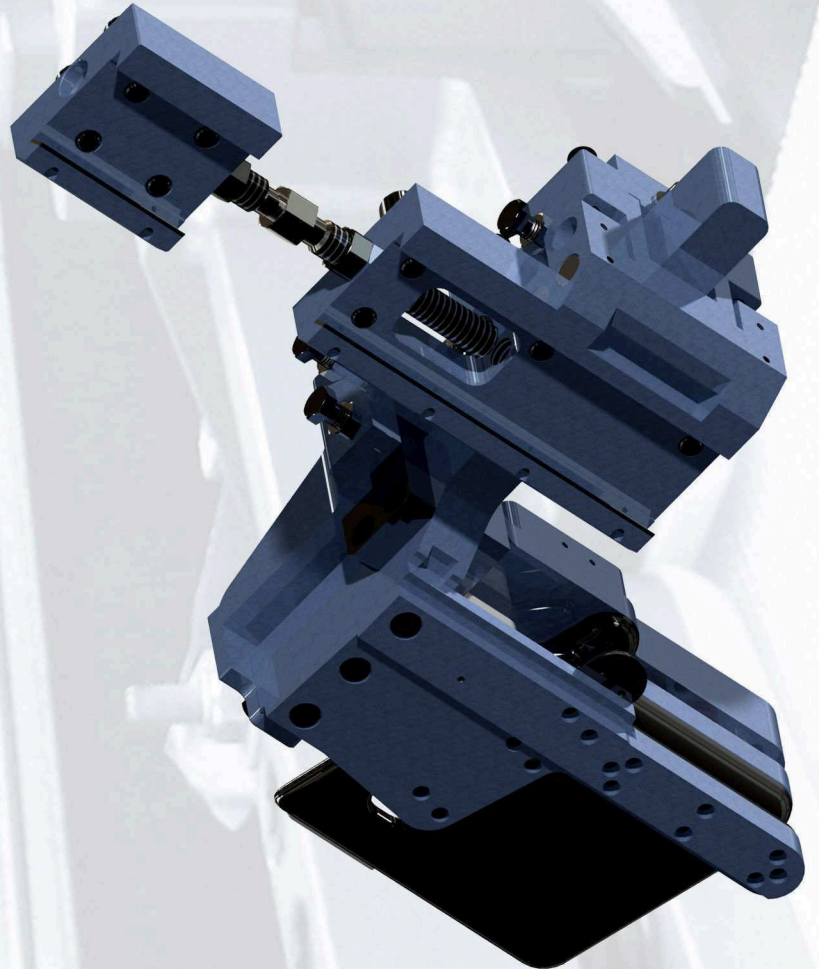
Details with advantages

The construction with varied adjustment possibilities facilitates a precise guiding of the temple inserts and the base fabric. Changeable POM fabric guides ensure at every time a smoothly running and perfect fabric edges.



Adaptable Dovetail Guides

Grounded V-strips with a thickness of 2.5 mm & 4.0 mm at the dovetail guide of the temple support and temple shoe allows a wide using range and a fix positioning of the temple.

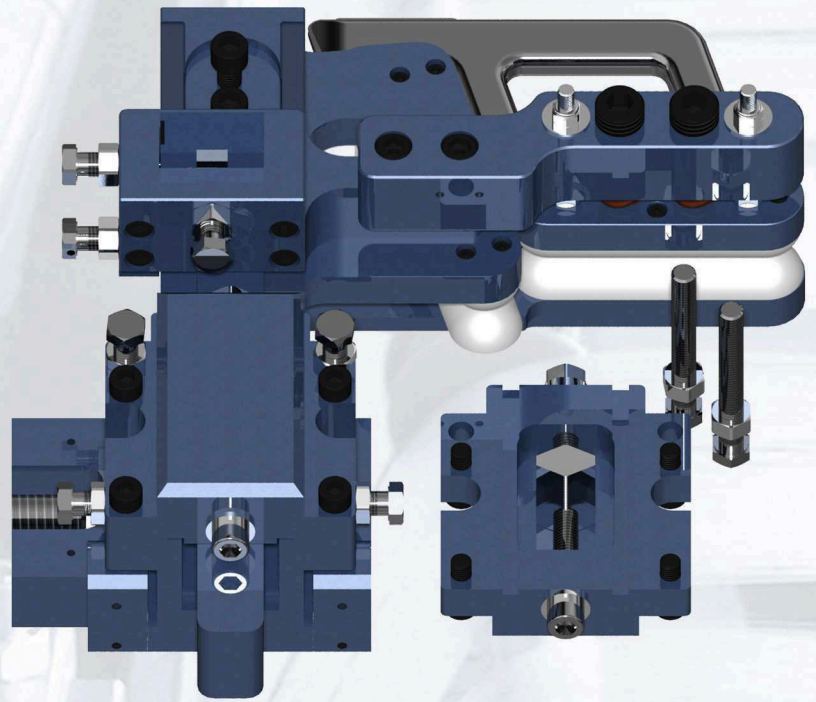
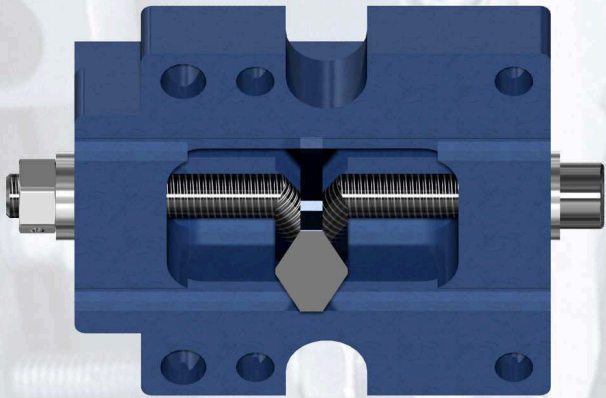


Dovetail latitude

V-Strip	Theoretical Dovetail latitude	
without	73.3 mm	70.8 mm
2.5 mm	70.8 mm	69.3 mm
4.0 mm	69.3 mm	68.0 mm

Well-thought-out engineering

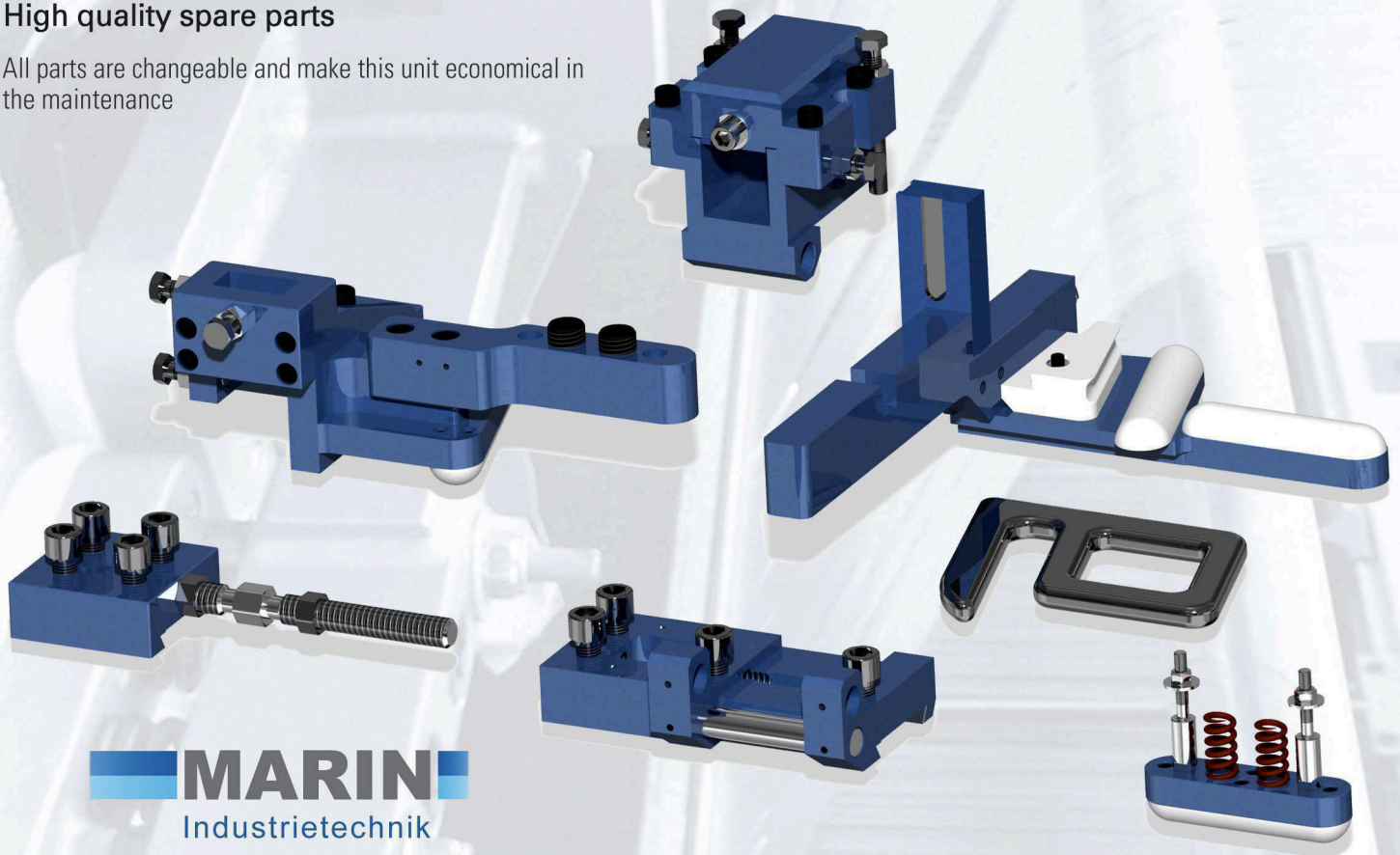
Every small detail is well-thought-out and user friendly conceived.



All settings can be made precise and easy, what supports the user to get a higher fabric quality.

High quality spare parts

All parts are changeable and make this unit economical in the maintenance



MARIN
Industrietechnik

Lechstrasse 2
73529 Schwabisch Gmuend
Germany

fon: + 49 (0) 7171 98 90 52
fax: + 49 (0) 7171 98 90 53

email: info@marin-technik.de
home: www.marin-technik.de