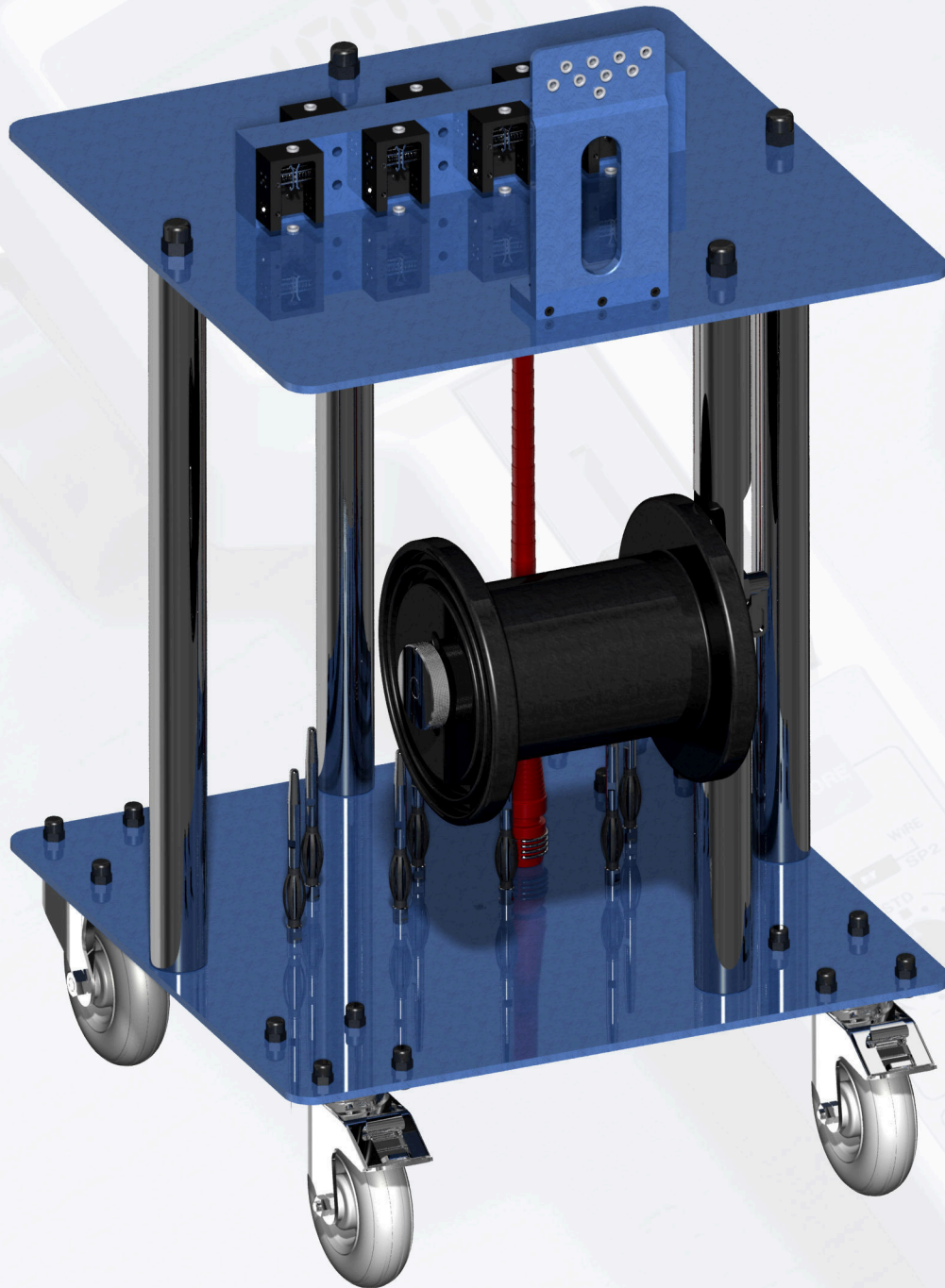


Solutions for Perfection from Marin Industrietechnik

MI - Bobbin Unit for Seam Fabrics



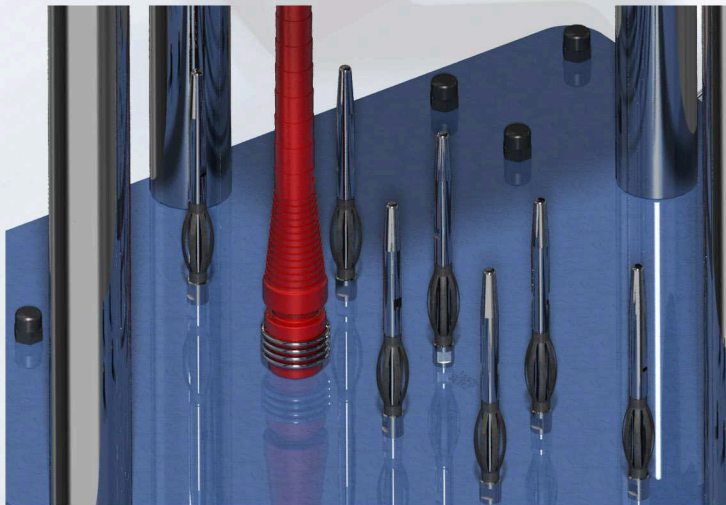
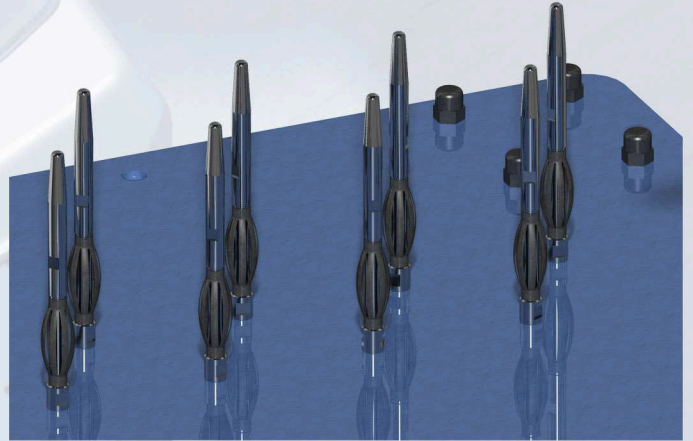
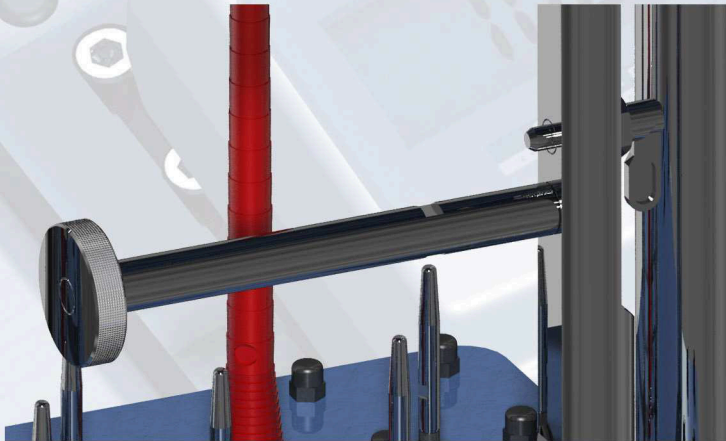
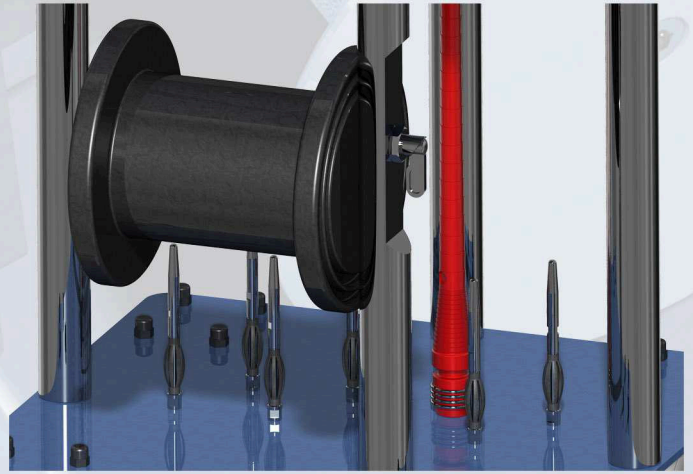
MI - Bobbin Unit for Seam Fabrics

For the production of high-quality seam fabrics, high quality equipment is required

The bobbin unit for seam fabrics from Marin Industrietechnik facilitates the use of one DIN 200 bobbin with seam cable and up to 8 pirns with BCF-Yarns for a better web adhesion at the seam area of the base fabric.

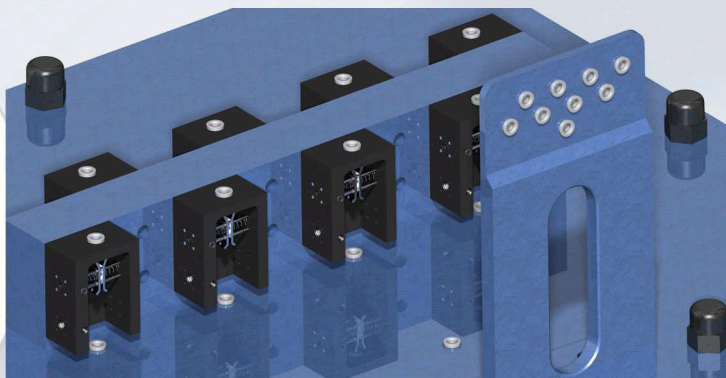
The bobbin support for the seam cable bobbin is conceived according a DIN 200 bobbin. A cam action indexing plunger ensures a fix holding and a fast manual unwinding of the bobbin.

Specially designed modular pirn spindles ensure a firm grip and aligned position of the pirns.



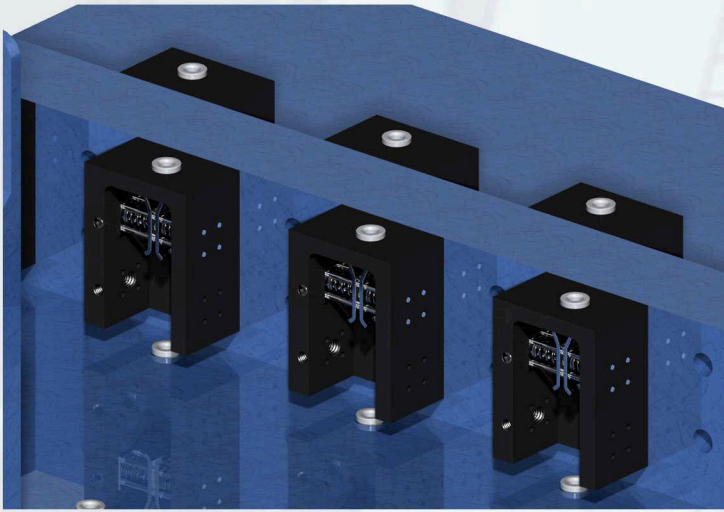
The arrangement of the pirn spindles as well as of the yarn brakes and ceramic eyelets has been designed accordingly the seam fabric weaving process. 4 BCF-Single Yarns are positioned on the left side of the seam cable and further 4 BCF-Single Yarns on the right side. This configuration enables the formation of a better seam reinforcement at the tissue side as well as at the loop side.

This particular feature of the bobbin unit allows the user a wide range of applications, because he can choose the number of used pirns according the product and place them accordingly to that at the unit. An entanglement or cross-over of the threads could not occur.

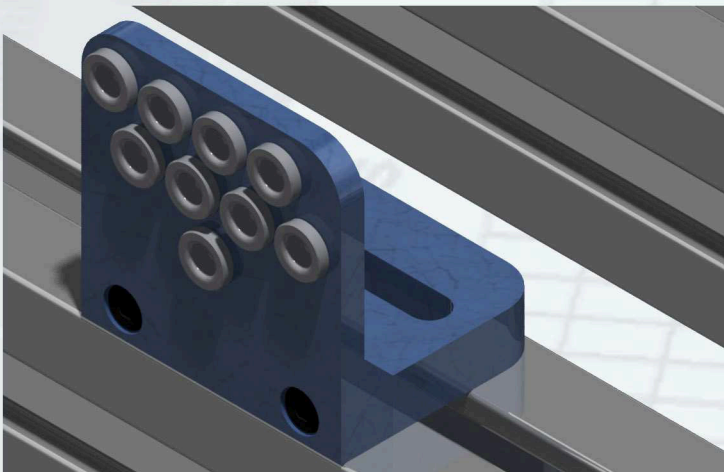


Modular precision thread brakes enable an exact adjustment of the yarn tension under consideration of the balance weights and the used materials. An unwanted running after of threads is not possible.

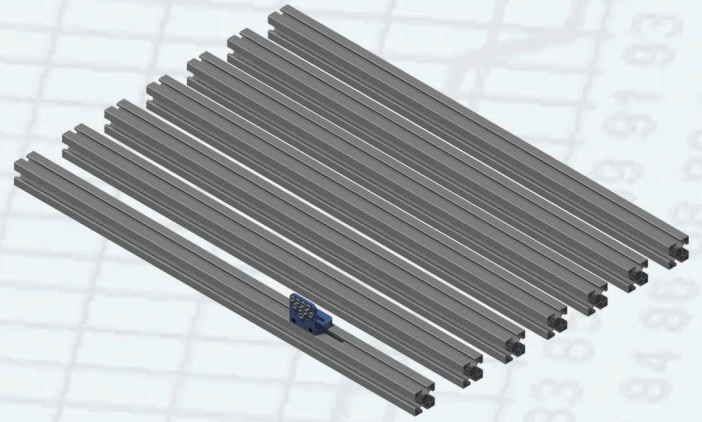
An important aspect is the separate tension adjustment function of each thread brake, what facilitates farreaching variety possibilities at the weaving of seam fabrics.



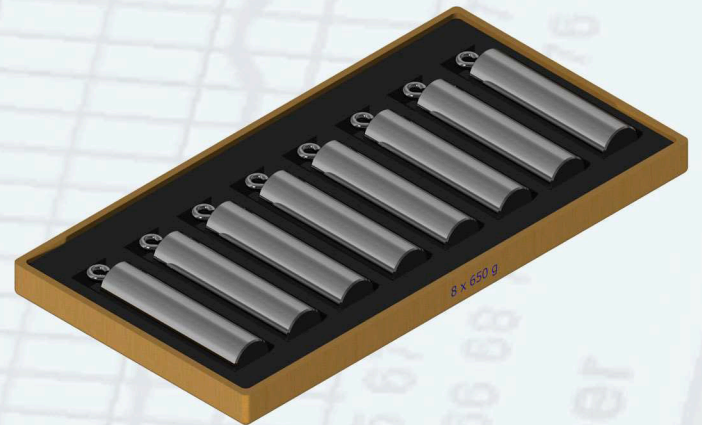
The ceramic eyelets order at the fastening bracket is equivalent with the positioning of the seam cable bobbin and the pirn arrangement at the unit. A crossover of the yarns could not take place.



The set also includes modular guide-rail profiles which are mounted at the whip roll area of the loom to ensure through the use of a movable mounting angle with guide eyelets, a straight feed of the threads to the harness heads and the reed.



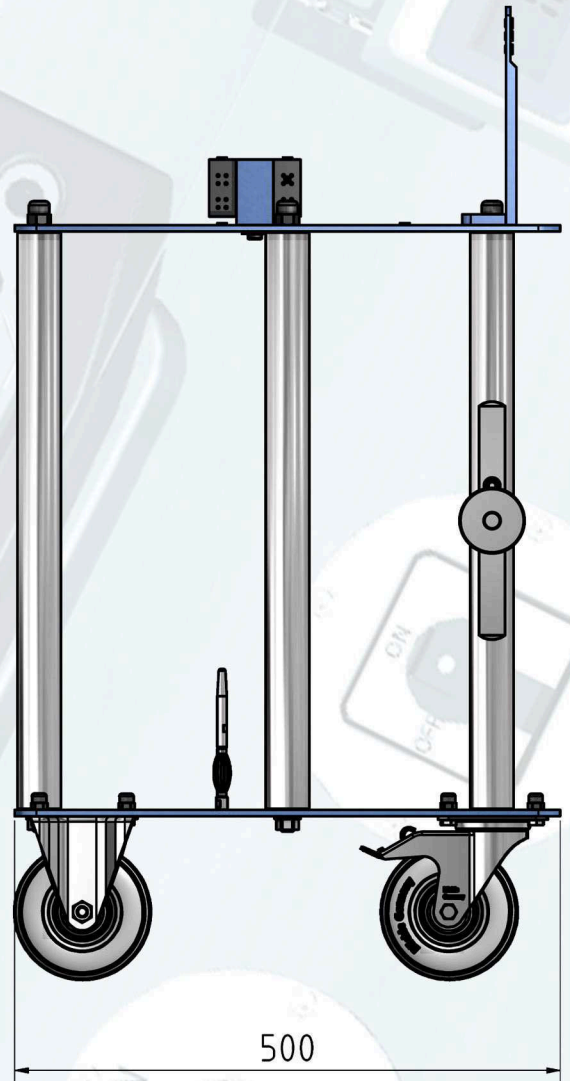
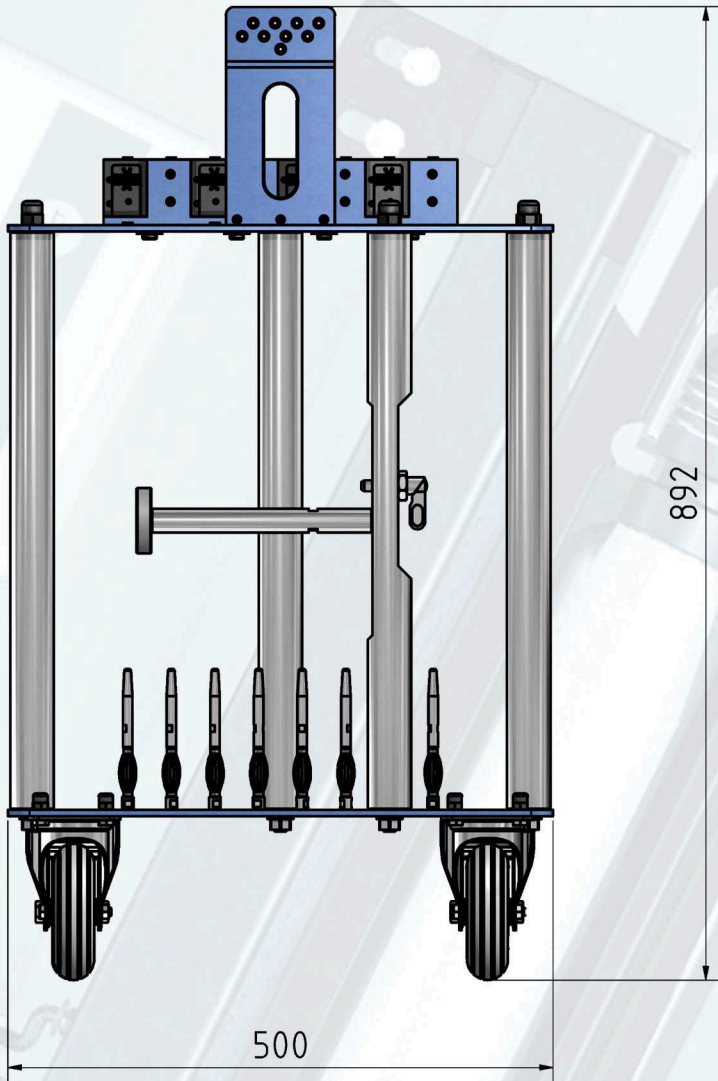
The bobbin unit comprises 8 customer specific balance-weights for the BCF-Yarns. A roll deflection unit for the yarns and the balance-weights has to be provided by the customer.



- *Well thought-out to the detail*
- *Compact and sturdy design*
- *Mobile for fast weave reed changing*
- *Facilitate a broad seam felt spectrum*



Dimensions:



MARIN
Industrietechnik

Lechstrasse 2
73529 Schwabisch Gmuend
Germany

fon: + 49 (0) 7171 98 90 52
fax: + 49 (0) 7171 98 90 53

email: info@marin-technik.de
home: www.marin-technik.de